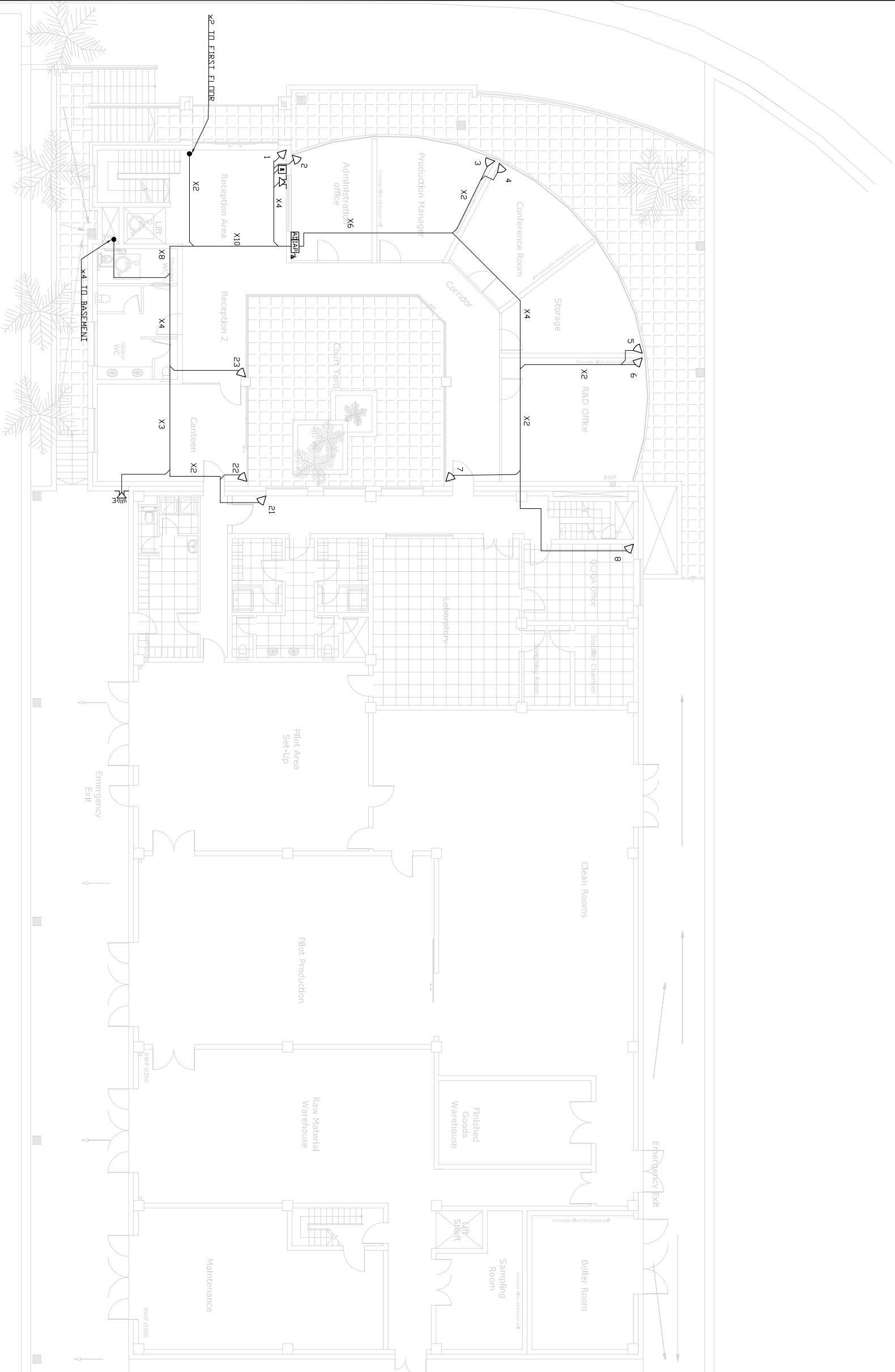


LEGEND

- ▽ MW & PIR MOTION DETECTOR - GAROTEC - RK4150T
X3 SOUNDBEARD 2 INTERNAL SOUNDER - GAROTEC - 21-392
X3 X330 EXTERNAL SOUNDER-BEACON - GAROTEC - EVOISER
□ G-1TAG LCD REMOTE KEYPAD - GAROTEC - 01-152
[AP] 595 INTRUDER ALARM PANEL - GAROTEC - 0112SPG3 C/V
[AB] 02083 ZONE EXPANDER AND BATTERY BACKUP
[AD] AUTODIALLER - BENTEL - BTEL2
▲ 230V SUPPLY THROUGH DOUBLE-POLE FUSED OUTLET (PROVIDED BY OTHERS)
6 CORE CABLE - IMC - ATS 24x14x022



NOTES

1. CONTROL EQUIPMENT TO BE PLACED IN SAFE AREA AND BE AS MUCH AS POSSIBLE UNREACHABLE FROM UNAUTHORIZED PERSONNEL ANY
2. CABLES TO BE RUN IN CONCEALED MANNER TO AVOID ANY TAPING
3. CABLES WITHIN REACH OR WITHIN UNSAFE AREAS SHALL BE
4. CONTROL EQUIPMENT TO BE SEGREGATED FROM LOW VOLTAGE WIRING.
5. MOTION DETECTORS TO BE MOUNTED AT BETWEEN 2M & 2.7M HEIGHT.

Rev no	Date	Modification	DA	JB
A	16/03/13	AS FITTED		



Alberta, Sun Gremlin Rd, Medical Park 3000, Maple
Website: www.alberta.com
TEL: (+386) 3144400
FAX: (+386) 3144407

JOB TITLE:	STERLING SNIFF - HAL FAR
JOB NO.:	15236

DRAWING TITLE:	AS FITTED INTRUDER ALARM SYSTEM PLAN VIEW GROUND FLOOR
----------------	---

DESIGNED BY:	ROBERT PARRUGA	SCALE:	1:100 (A1)
DRAWN BY:	ADREAS ONI	DATE:	04 OCT 12
CHECKED BY:	MATTHEW CASSAR	DRAWING NO.:	504/12/A-010

